

FLOOD LIGHT

Freedom flood light



Specification

Product Name	Flood Light
Product Model	
Version No.	V01
Sepecification No.	
Date	2020.07.12

Catalogue

- 1、 Feature and range of application _____ page 3
- 2、 Figure and size _____ page 4
- 3、 Main parameter and life test _____ page 5
- 4、 Intensity Distribution Curve _____ page 6
- 5、 Temperature test report _____ page 7
- 6、 Installation Guidance _____ page 8
- 7、 package information _____ page 9
- 8、 Warranty and After-sales service _____ page 10

1. character and application

patented product, easy installation, aluminum alloy stuff driver box, make the product strong and durable, make the driver heat dissipation effect high, and lengthen the lifespan of the product.

Chip Character :

Imported SMD3030LED light source with high brightness and long life.

Driver character :

Driver character Famous brand driver, international common input voltage AC100-240V, short circuit/overcurrent/overvoltage/over-temperature protection function, power factor can be adjusted, PF>0.95, protection grade is Ip65.

Heat sink feature :

Heat sink characterThe pyroconductivity of No. 1060 aluminum is the highest. It's up to234W/m*k. Big heat dissipation area, light weight, fast convection, good heat dissipation and low temperature. The Fin-type heat sink is stamping, automatic assembly, not soldering.High efficiency production, good manufacturing technique and superb quality

Installs Way: Installation waysConnect the sheetmetal
fix in the ground and wall

Certification : CE, ROHS

2.energy-saving

100W Flood light can take place
205W HPSL

3.product application

Product Application: tunnel, workshop, building,
bridge, park scenic spot, sculpture garden.

Product shape



(single module-50W)



(double module-100W)



(single module+bracket)

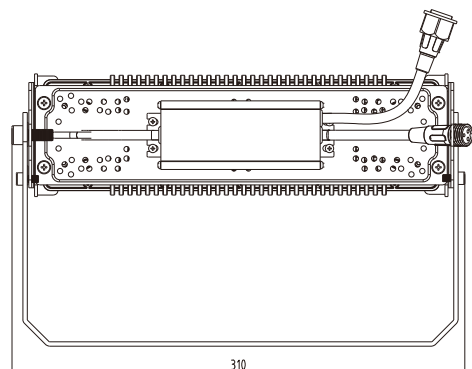
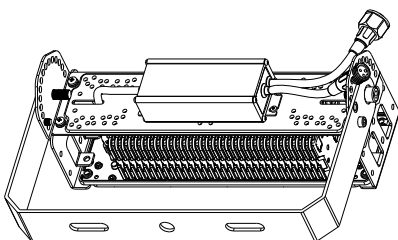
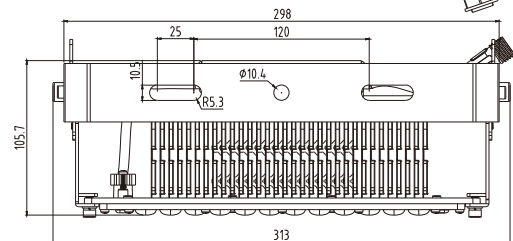
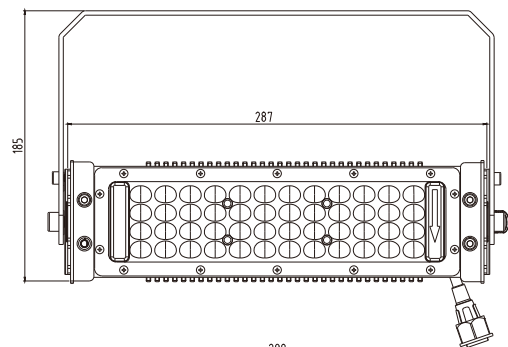
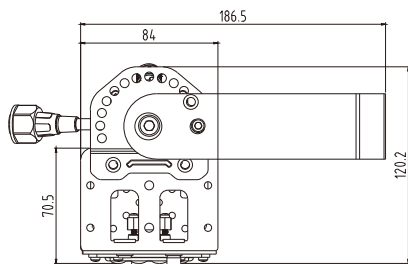


triple module-150W)



(quadruple module-200W)

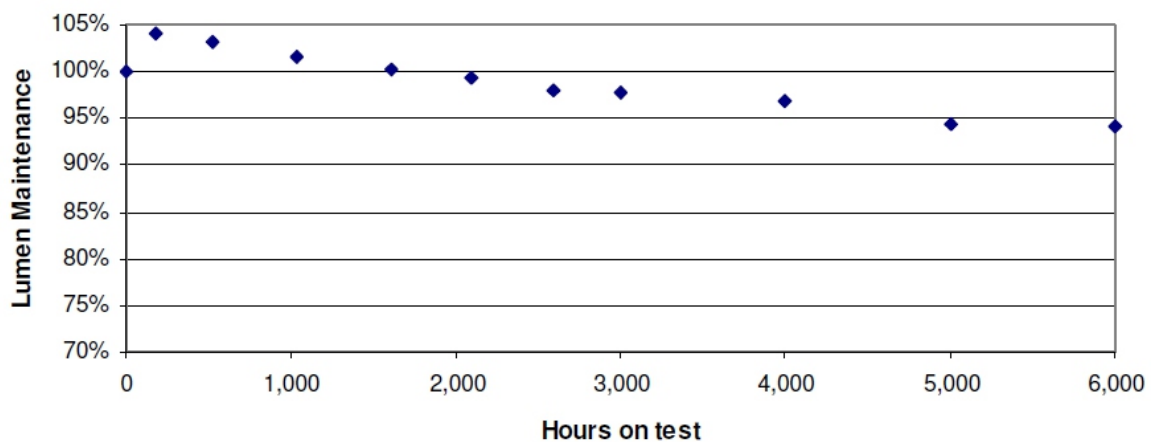
Product size



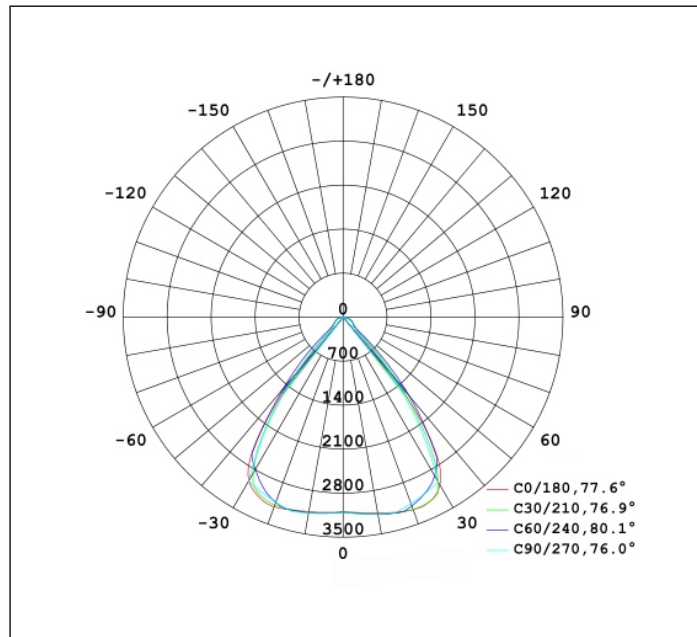
electrical Parameter

Item No.	parameter			unit
Input Voltage	AC 100 ~ 240V			V
Rated Wattage	50W/module			W
Driver Efficiency	89%			/
Power Factor	0.95			PF
Beam Angle	77±5			Degree
Color Temperature	WW/2700-3000	NW/4000-4500	PW/6000-6500	K
optical efficiency	97 lm/W ± 5			lm
CRI	>70			Ra
Working Temperature	-20 ~ +40			C
IP Grade	Ip65			
Life Time	3			Year

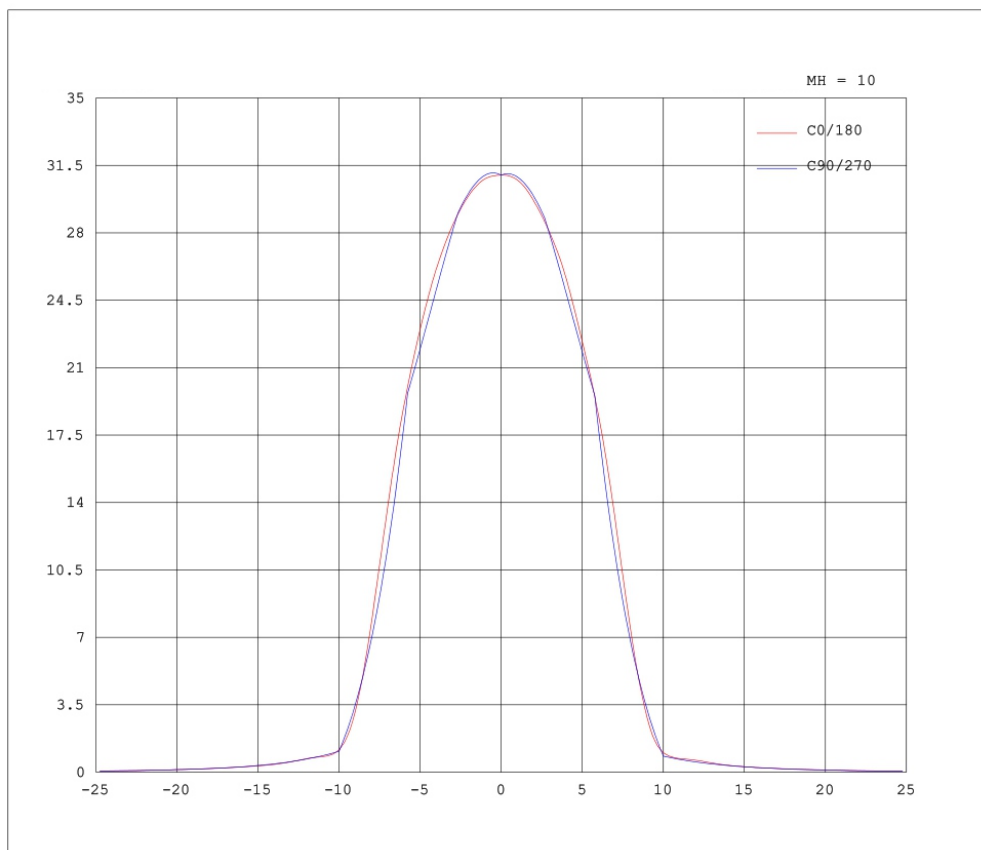
Diagram of continue operating for 6000H



distribution curve flux



Intensity Distribution Diagram (50W/module)

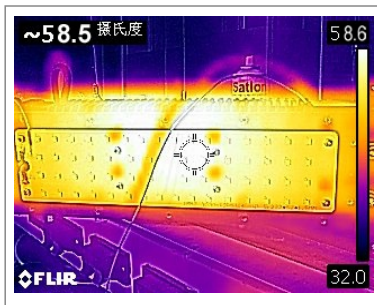
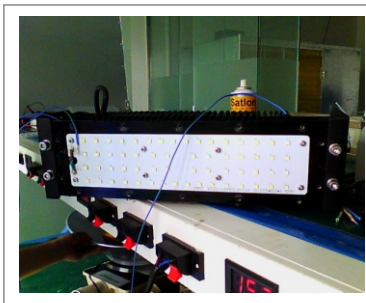


Temperature test report

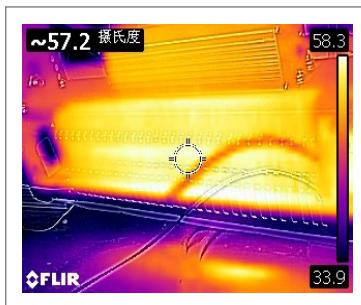
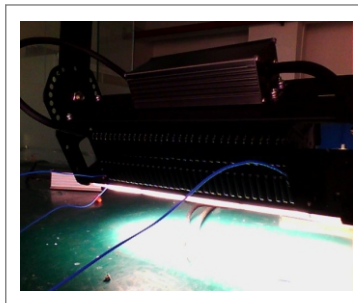
Product Name	position	Temperature(°c)	Ambient temperature	Temperature rise
	LED Test Pin	58.8	31	27.5
	PCB	57.2	31	26.2
	housing	55.9	31	24.9
	Driver	53.2	31	22.2

Thermal imagery

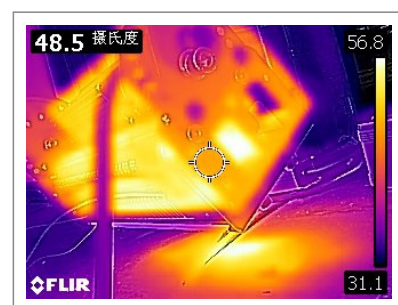
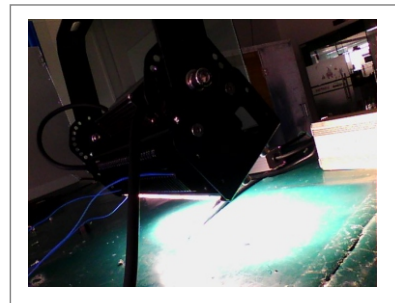
PIN



lamp board



lamp body

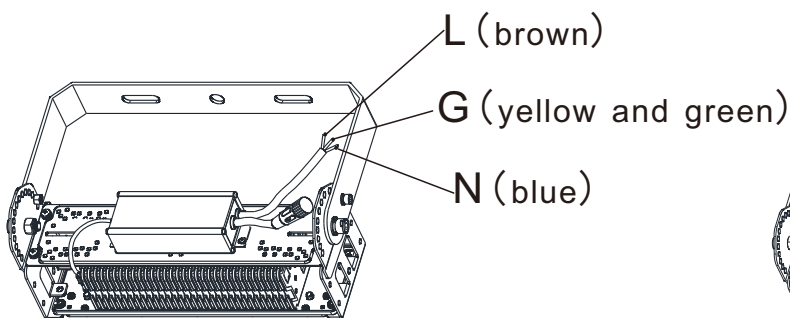


direction for use

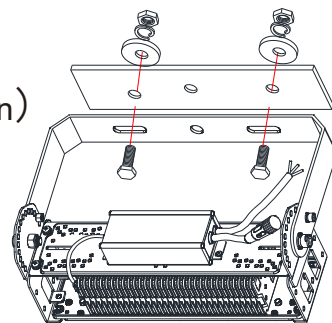
- Blackout before installation. Don't install it with electricity.
- It must be installed by the certified technical electrician.
- The product must be installed by the bracket and screws.
- 10mm screw and nut fastens the bracket as the firmware.
- Connect the wire. It's 0.75MM² triple-core, brown is firing line, blue is zero line, yellow green is ground line.

Installation Instruction

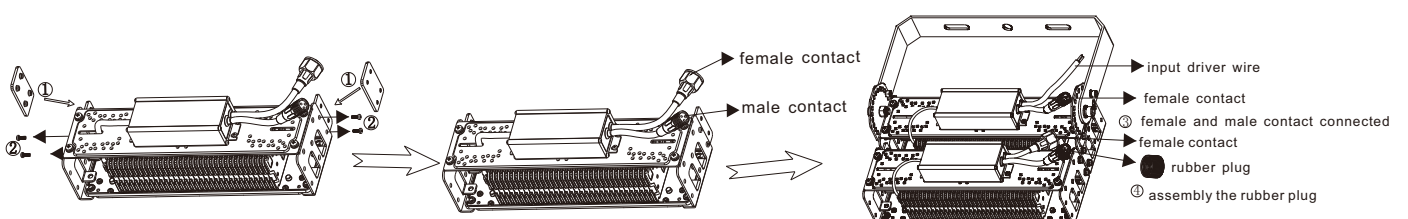
wiring diagram



installation instruction



module flood light assembly instruction



Packing information

package size	module A	module B
carton size(mm)	320x185x95	290x115x95
Weight(g)	1580	910

Attentions ---

- Don't try to install the damaged product.
- Don't install the lamp in the inclosed place in order to good heat dissipation effect.
- Make sure the wire connection is good and safe to avoid electric leakage after installing the lamp.
- Waterproof measure must be taken when connecting the driver.
- Don't violate the law of fire controll when using the lamp.

Maintenance Instuction ---

- Product guarantee 2 years, the manufacturer will be respon-sible for the quality during the period. The damage resulted of irresistible clause will have paid maintenance.
- Turn off the driver when maintaining the lamp.
- Regularly Clean the dust on the heat sink in order to good eat dissipation effect.
- Don't use the chemical or corrosive liquid to clean the lamp. Please use dry cloth to clean it.
- Please contact with the dealer and manufacturer if the LED chip or driver has to be replaced. Because the waterproof and dustproof performance will be effected after dismounting again.